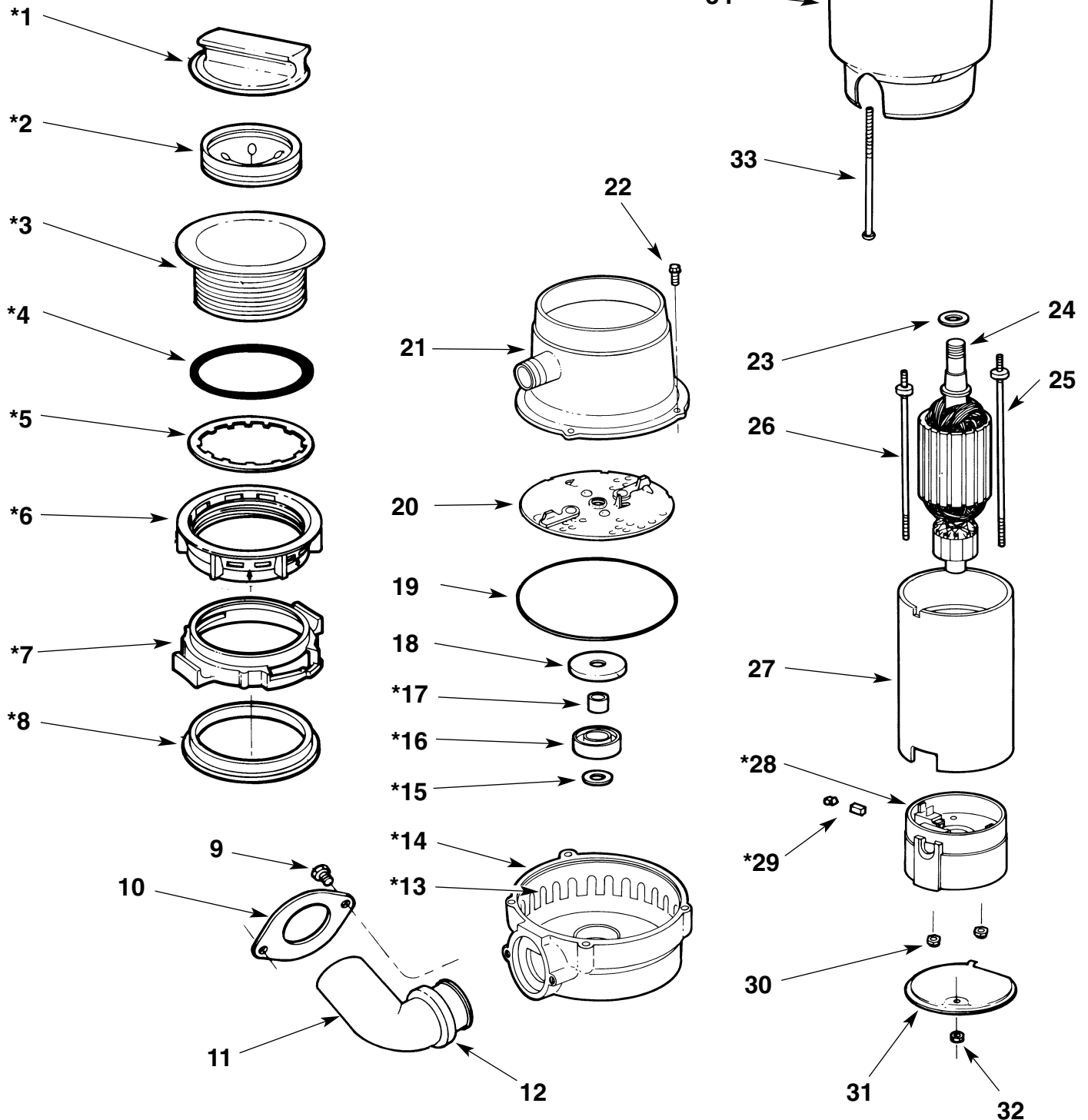


# Waste King<sup>®</sup> Gourmet series

by Anaheim Manufacturing

## PARTS LIST MODELS 111 & 1001



P.O. BOX 4146  
ANAHEIM, CA 92803 U.S.A.

\* PART OF AN ASSEMBLY, BUT CAN BE PURCHASED SEPARATELY.

ITEM NO.	DESCRIPTION	MODEL 111	MODEL 1001	QTY. PER UNIT
MOUNT ASSEMBLY		.249C019S75	.249C019S75	.1
*1	.STOPPER	.174C068P01	.174C068P01	.1
*2	.SPLASH GUARD	.614C069P01	.614C069P01	.1
*3	.SINKFLANGE & CAP ASSEMBLY.	.249C014S35	.249C014S35	.1
*4	.RUBBER GASKET	.269C031P01	.269C031P01	.1
*5	.FIBER GASKET (WAXED)	.269C033P01	.269C033P01	.1
*6	.SUPPORT RING	.614C072P01	.614C072P01	.1
*7	.MOUNT RING	.614C059P02	.614C059P02	.1
8	.CUSHION MOUNT RING	.469C004P02	.469C004P02	.1
9	.OUTLET SCREW	.636C017P03	.636C017P03	.2
10	.OUTLET FLANGE	.249C009P01	.249C009P01	.1
11	.OUTLET ELBOW	.673C015P01	.673C015P01	.1
12	.RUBBER OUTLET GASKET	.269C038P01	.269C038P01	.1
DRAIN HOUSING ASSEMBLY		.311C080S03	.311C080S03	.1
*13	.GRIND RING	.614C066P03	.614C066P03	.2
*14	.DRAIN HOUSING	.311C080P01	.311C080P01	.1
*15	.THRUST WASHER	.789C041P01	.789C041P01	.1
*16	.WATER SEAL	.645C006P01	.645C006P01	.1
*17	.SPACER SEAL	.102C005P01	.102C005P01	.1
18	.SLINGER	.789C034P04	.789C034P04	.1
19	.O-RING	.645C004P01	.645C004P01	.1
20	.TURNTABLE ASSEMBLY	.258C032S01	.258C032S01	.1
21	.HOPPER	.311C077S01	.311C077S01	.1
22	.HOPPER SCREW	.636C023P01	.636C023P01	.4
23	.WASHER	.789C035P02	.789C035P02	.1
24	.ARMATURE ASSEMBLY.	.626C035P02	.626C035P03	.1
25	.MOTOR STUD	.687C003P01	.687C003P01	.1
26	.MOTOR STUD	.687C003P02	.687C003P02	.1
27	.MOTOR SHELL ASSEMBLY.	.681C031S12	.681C031S12	.1
ENDBELL ASSEMBLY		.311C081S01	.311C081S02	.1
*28	.ENDBELL.	.311C081S53	.311C081S53	.1
*29	.MOTOR BRUSH & BRUSH SPRING ASSY	.027C029S02	.027C029S02	.2
30	.NUT	.479C019P01	.479C019P01	.2
31	.INSPECTION PLATE	.554C032P01	.554C032P01	.1
32	.NUT	.479C021P01	.479C021P01	.1
33	.SHELL SCREW	.636C029P02	.636C029P02	.3
34	.LOWER SHELL	.806C044P03	.806C044P03	.1

\*PART OF AN ASSEMBLY, BUT CAN BE PURCHASED SEPARATELY.